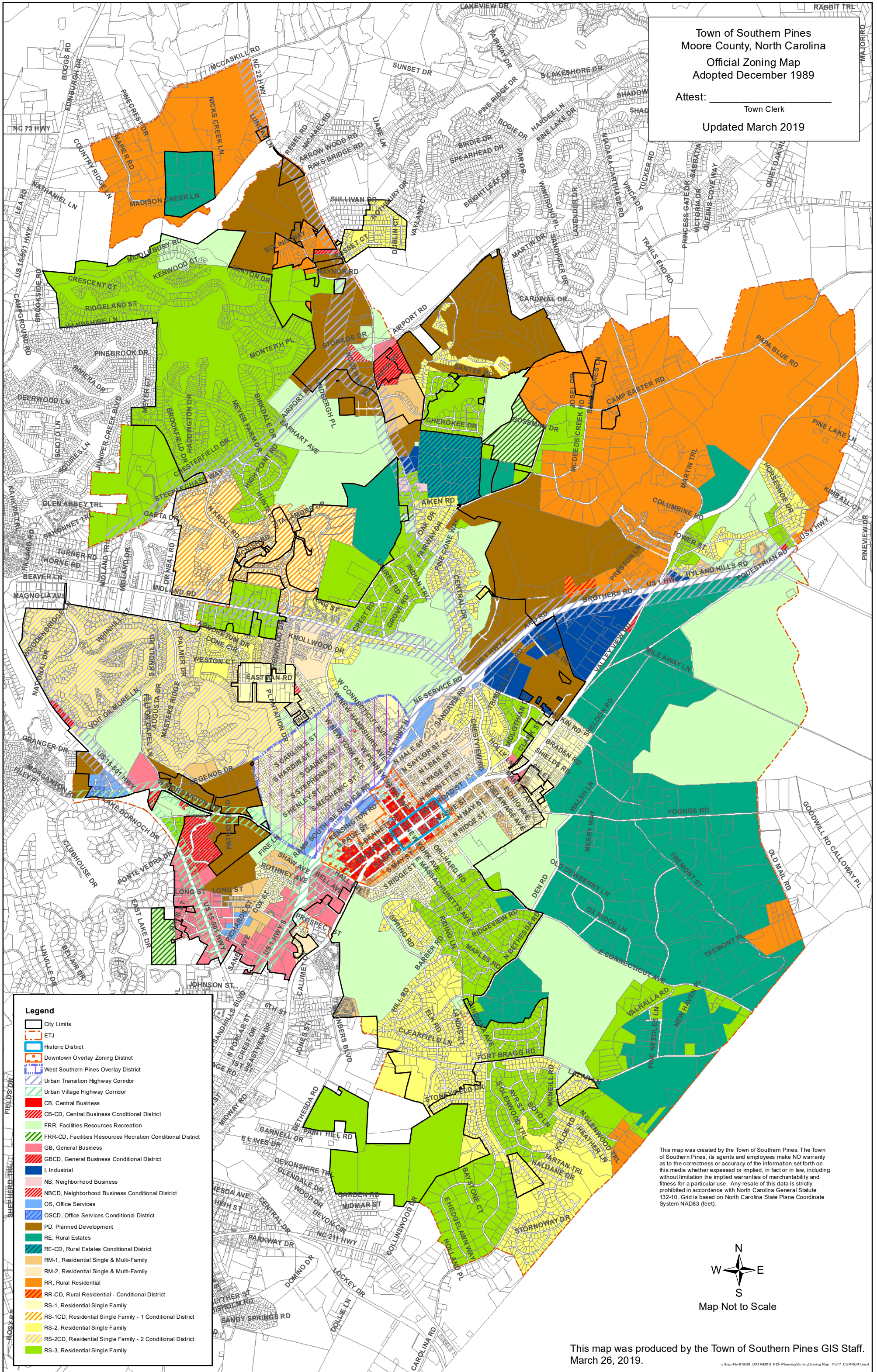


Town of Southern Pines
 Moore County, North Carolina
 Official Zoning Map
 Adopted December 1989

Attest: _____
 Town Clerk
 Updated March 2019



Legend

- City Limits
- ETJ
- Historic District
- Downtown Overlay Zoning District
- West Southern Pines Overlay District
- Urban Transition Highway Corridor
- Urban Village Highway Corridor
- CB, Central Business
- CB-CD, Central Business Conditional District
- FRR, Facilities Resources Recreation
- FRR-CD, Facilities Resources Recreation Conditional District
- GB, General Business
- GB-CD, General Business Conditional District
- I, Industrial
- NB, Neighborhood Business
- NB-CD, Neighborhood Business Conditional District
- OS, Office Services
- OSCD, Office Services Conditional District
- PD, Planned Development
- RE, Rural Estates
- RE-CD, Rural Estates Conditional District
- RM-1, Residential Single & Multi-Family
- RM-2, Residential Single & Multi-Family
- RR, Rural Residential
- RR-CD, Rural Residential - Conditional District
- RS-1, Residential Single Family
- RS-1CD, Residential Single Family - 1 Conditional District
- RS-2, Residential Single Family
- RS-2CD, Residential Single Family - 2 Conditional District
- RS-3, Residential Single Family

This map was created by the Town of Southern Pines. The Town of Southern Pines, its agents and employees make NO warranty as to the correctness or accuracy of the information set forth on this media whether expressed or implied, in fact or in law, including without limitation the implied warranties of merchantability and fitness for a particular use. Any resale of this data is strictly prohibited in accordance with North Carolina General Statute 132-10. Grid is based on North Carolina State Plane Coordinate System NAD83 (feet).



This map was produced by the Town of Southern Pines GIS Staff.
 March 26, 2019.