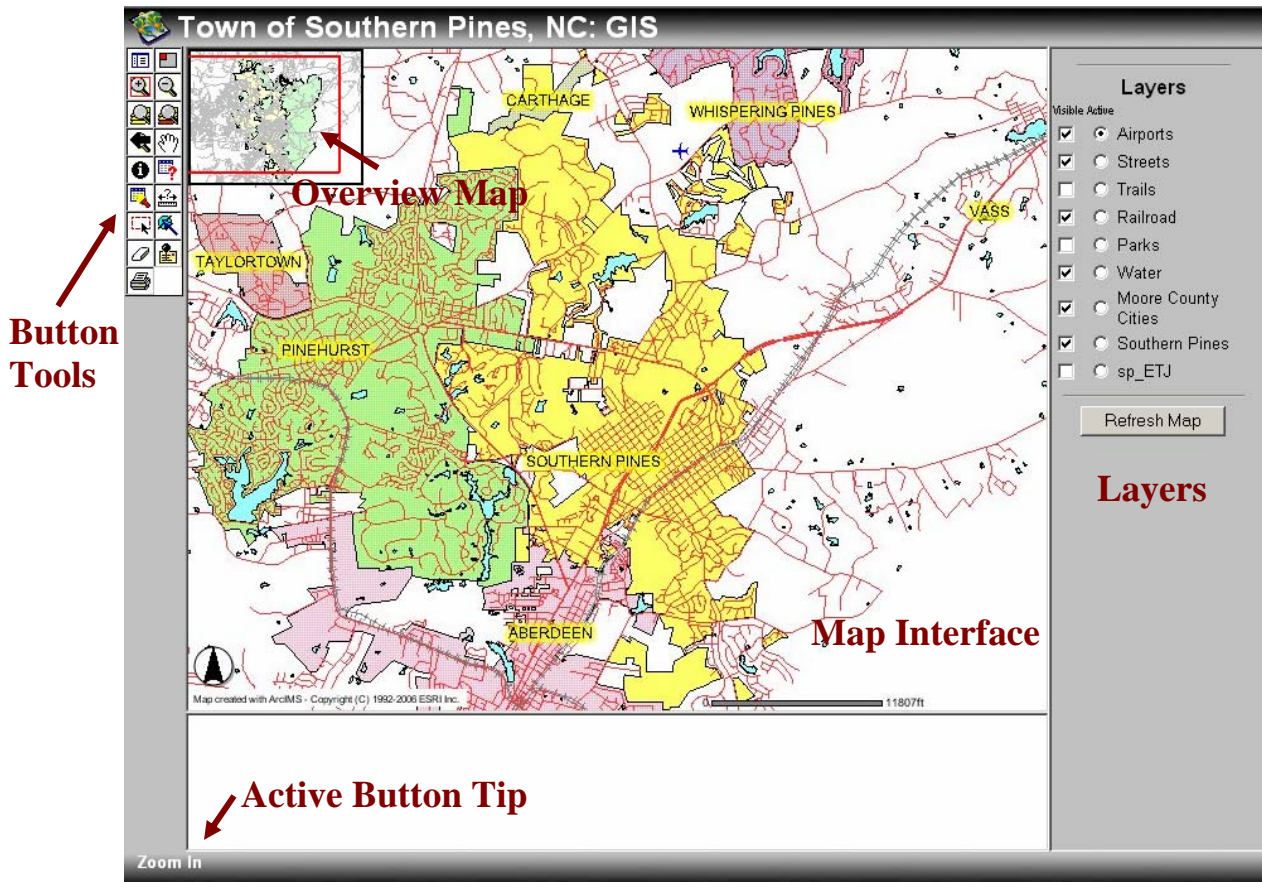
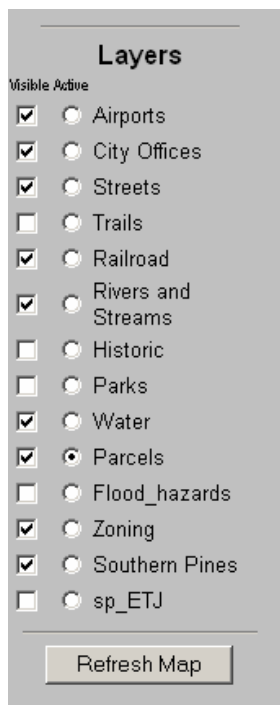


Interactive GIS Website Help

Interface Introduction



Layer and Layer Descriptions



This is the list of all available layers.

Some of the layers are only available when you zoom in on the map. For example *City Offices*, *Parcels*, *Rivers and Streams*, and the *Aerial Photography (Image Directory)* are available only when you are zoomed in. These layers will not show in the **Layer List** until they are able to be viewed in the **Map Interface**.

Check or uncheck the **Visible Box** to view or hide a layer. You will need to click on the **Refresh Map** button in order to view your changes. Many layers can be viewed at the same time.

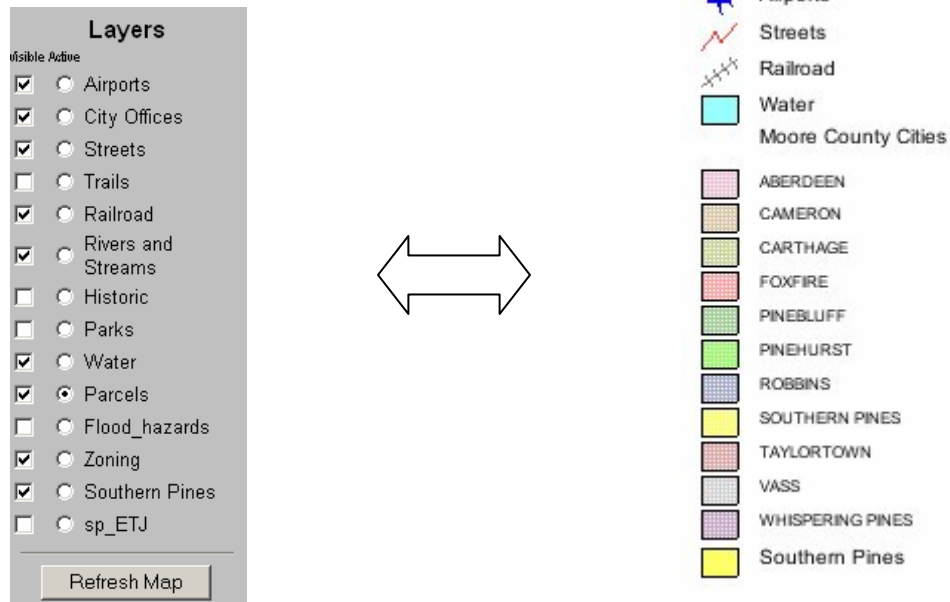
To make a Layer **Active** check the option button for that layer. Only one Layer can be active at any one time. Making a Layer **Active** allows you to use the **Identify** button as well as other tools on that Layer. The **Identify** button as explained below allows you to find out more information about a feature on the map.

Button Descriptions



Toggle between Legend and Layer List

This button toggles between the **Layer List** (which is the default) to a more traditional **Legend**. When the Legend is chosen you DO NOT have the option to turn on and off layers or to make a Layer Active.



Toggle Overview Map

This button turns on and off the *Overview Map*.



Print

This button allows the user to print the map. Click on this button and enter a title for your map. A popup window will show up with the preview of the map to print. Use your browser to print from there.

FYI: An alternate way to print a map is to take a screen shot of the computer screen. Beside the F12 Key on your keyboard is a **Print Screen** Button. Clicking on this button will take a picture of your computer screen. You can then use **Paint** or another, similar type software to clip out your map and print.

Zoom Tools



Zoom In

Zoom in by clicking on this button then drawing a rectangle on the map. Click on the map and hold down the mouse key move the mouse to the next corner of the rectangle and let up on the mouse button.



The size of the box drawn indicates how much you zoom in. A large box means you will zoom in less and show a larger area on your map. A small box means you zoom in more and have a smaller area on your map.



Zoom Out

Zoom out by clicking on the map once or by drawing a rectangle on the map as described above.



Zoom to Full Extent

Click on this button to go back to the original extent of the map. This will zoom the map back out to view the entire city.



Zoom to Active Layer

This button will zoom the map to the extents of the *Active Layer*. If the *Active Layer* is parcels you will zoom to the entire County or if the *Active Layer* is City Offices you will zoom into only the city offices.



Pervious Extent

This button will take you back to the last view you looked at on the map. For instance if you find you've zoomed in too far you can click this button to go back to the pervious view and try again.



Pan

This button allows you to pull and move the map around without changing the extents (zoom) of the map. For instance if you want to move north on the map but keep the same extents click on this button then click on the map and pull it down. You can move the map in any direction with this tool.

Informational Buttons



Identify

This button allows the user to find out more information on a feature. To use this button make the layer you want more information from *Active* (by clicking on the option button beside the layer in the **Layer List**), then click on the button in the toolbar and click on the feature on the map. For instance, if you want more information about a particular parcel, make the Layer *Active*, choose the **Identify** button then click on that parcel on the map. The Information for the parcel will appear below the map.

Rec	AREA	PIN	LRK	NAME	MAILADDR	MAILCITY	MAILSTATE	MAILZIP	CITYCODE	PRO
1	13711.9941406	857210701692	38896	CRAWFORD, MICHAEL & RUTH	1125 W MICHIGAN AVE	SOUTHERN PINES	NC	283870000	SP	BLK R 14 LOT 2



Query Builder

This button will allow the user to create a query of their own. To create a query you must first make the layer you wish to query on *Active*. Click this button and the query tools will show up below the map.

Example: Find all Parcels with Taxable acreage above 15 acres.

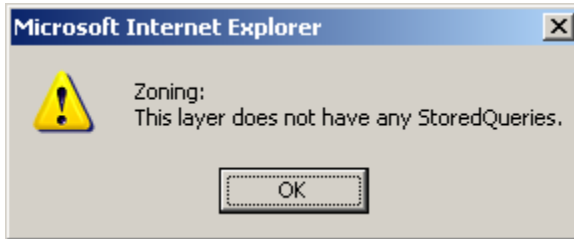
To run the query click on the execute button. A list of parcels will then show up in this section below the map. To zoom to a particular parcel click on the **blue Rec** number beside the selected record.

Rec	AREA	PIN	LRK	NAME	MAILADDR	MAILCITY	MAILSTATE	MAILZIP	CITY
1	3349376.513	868400921389	555	B P INVESTMENT COMPANY, LLC	7110 OLD STAGE RD N	ANGIER	NC	275010000	
2	4291845.39063	861400614989	12329	RITTER, FLETCHER	256 FLETCHER LN	ROBBINS	NC	273257512	
3	2183229.08203	862400126588	9610	GARNER, JUDY LEE	1048 N HOWARD MILL RD	ROBBINS	NC	273250000	



Search

The search tool is much like the Query builder but the most common searches have already been formatted for you, to make them simpler to use. Again make the layer you want to search on the *Active* layer. Layers that have searches are *Parcels*, *Parks*, *City Offices*, and *Address Points*. If the Layer does not have any stored queries/searches then a message box will pop up.



An example of a stored Search would be to look up an LRK (parcel record number assigned by the county) number. Make the Parcel layer *Active*, click on the **Search** button, choose the correct search in the left drop down box then enter the LRK number in the value box, and click on Execute.



The selected record will show up in place of the Search box.



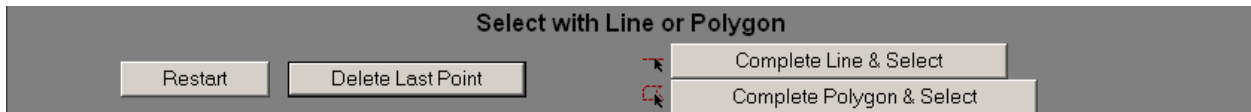
Select by Rectangle

To select a feature on the map first make the layer containing the features *Active*, then choose this button and then click or draw a rectangle on the map over the features you wish to select. The selected features will turn dark yellow on the map and the information for the features will appear below the map.



Select by line or Polygon

This button allows the user to draw a line or polygon on the map to select features. First make the layer with the features to select *Active*, then click on the button and draw the line on the map. At the bottom of the screen you have options to finish the line and select or finish the polygon and select, as well as, the option to modify the drawn line or restart.



Clicking on the complete buttons will select the features and information on these features will replace the above wizard.



Clear Selection

This button clears the selected features.



Locate Address

This button allows the user to find a geocoded address location. The address location is the approximate location along a road centerline where the user's entered address would be located. Clicking on this button will bring up the following wizard below the map interface. Streets is the layer that the search will take place on. Enter the address you want to search for, you do not need to enter a cross street. Then click on Locate.

Layer: Streets	Locate
Street: street number, street name and type	170 W Connecticut Ave
Cross street: cross street name and type	

Locate Results		
1	170 W CONNECTICUT AVE	100
2	170 E CONNECTICUT AVE	77
3	170 N CONNECTICUT ST	52

A list of possible addresses will be selected; a match percentage number will show up to the right of the addresses. To locate the address on the map click on the **blue** number to the left of the address, the map will then zoom into that location. The address will show up as a red dot with the address. To clear this, use the clear selection button.

